

# KARIBAN

**SIZES :** S\_M\_L\_XL\_XXL\_3XL

**COMPOSITION :**

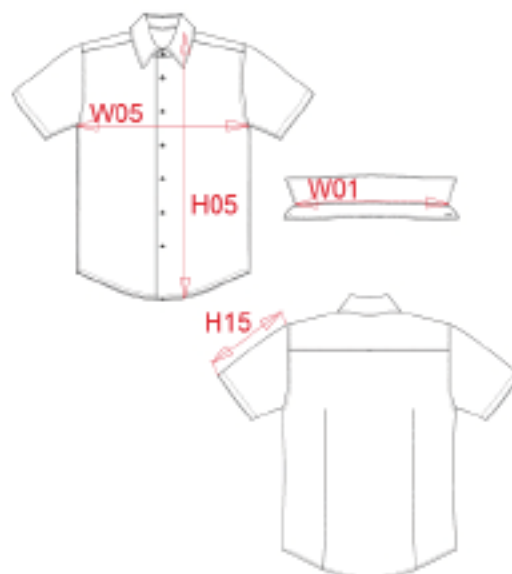
Main fabric : Cotton / Elastane poplin 97/3 - 120 97%cotton / 3%elastane

**WEIGHT :**

Main fabric : 120 gsm

**ARTICLE WEIGHT :**

290 gr/pc



DESCRIPTION
Français : Chemise homme manches courtes
English : Men's short sleeve stretch shirt
Nederlands : Heren overhemd met korte mouwen
Deutsch : Pflegeleichtes herren kurzarm stretch-hemd
Español : Camisa de manga corta
Italiano : Camicia uomo maniche corte
Português : Camisa de manga curta em stretch

COLORS	PANTONE SERIGRAPHIE
White	White
Black	Black
Zinc	447C
Light blue	544C
Navy	433C
Wine	504C

MEASUREMENT						
Description	S	M	L	XL	2XL	3XL
W01 Longueur encolure / Neckline length	40,60	41,76	43	44,26	46,60	48,76
H05 Hauteur totale dos / Back total height	78,60	78,60	80,60	82,60	84,60	88,60
W05 1/2 largeur poitrine / 1/2 chest width	61	64	67	80	83	88
H15 Longueur manche / Sleeve length	24	24,76	26,60	28,26	27	27,76

CARE LABEL

PACKING	
Box	12 pcs / box S => L:80cm W:40cm H:19cm GW:5.32kg NW:3.62kg M => L:80cm W:40cm H:19cm GW:5.40kg NW:3.70kg L => L:80cm W:40cm H:19cm GW:5.50kg NW:3.80kg XL => L:80cm W:40cm H:19cm GW:5.80kg NW:3.90kg XXL => L:80cm W:40cm H:19cm GW:5.72kg NW:4.02kg 3XL => L:80cm W:40cm H:19cm GW:5.84kg NW:4.14kg