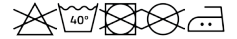


URBAN R1067



DUO  KIDS



DESCRIPTION

Hoodie with double fabric, adjustable drawcord, reinforced covered seams in collar and kangaroo style pocket. Available in uni-colours and two-tone colours. 1x1 elastane rib in cuffs and waistband. Removable label.

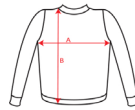
COMPOSITION

50% cotton / 50% polyester, 280 gsm brushed fleece. Heather grey 58: 55% cotton / 40% polyester / 5% viscose.

SIZES

S · M · L · XL · 2XL · 3XL · 4XL

SCHEME



QUANTITIES

Adults:

Box	Pack
25 un.	1 un.

COLORS



SIZES

Adults:	XS	S	M	L	XL	2XL	3XL	4XL
WIDTH (A)	51cm	54cm	57cm	60cm	63cm	66cm	69cm	72cm
LONG (B)	64cm	66cm	68cm	70cm	72cm	74cm	76cm	78cm

*[Measured from the edge 1 cm below the sleeves / Measured from the highest point of the shoulder to the end of the garment]

PRINTING TECHNIQUES AVAILABLE

Screenprint
Transfer
Digital transfer
Embroidery fixed

RELATED MODELS



URBAN WOMAN R1068



URBAN KIDS K1067



VINSON R1074



CLASICA R1070