

B&C SUPERHOOD /WOMEN -

HEAVY WEIGHT JACKET / DOWN JACKET



Heavyweight puffer bomber with fashionable contrasted inner lining

POLYESTER 300T TAFFETA

Outer layer: 100% polyester 300T taffeta

Inner layer: 100% polyester padded taffeta with feather touch padding

XS - S - M - L - XL - 2XL

1 pc/pack & 10 pcs/carton



WHITE WITH WARM GREY LINING



BLACK WITH COBALT BLUE LINING



NAVY WITH NEON GREEN LINING



RED WITH BLACK LINING



ROYAL BLUE WITH NEON ORANGE LINING



DARK GREY WITH NEON ORANGE LINING



Windproof



Water-repellent



Showerproof

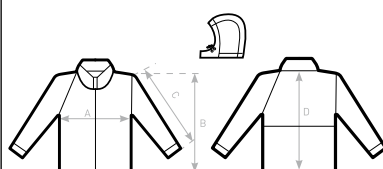


Feminine cut



Thermo-insulated

- Adjustable, removable padded hood
- Left chest and back (shoulder to middle back) panels with hidden zips for easy decoration access
- Standing collar, full length internal stormflap and cotton feel 2x2 rib on cuffs and hem for wind protection
- Bomber style, retail cut for a contemporary image
- 2 zipped hand pockets
- Fabric tested for the following decoration techniques: screen printing, heat transfer, sublimation (for white only) and embroidery



SIZES [CM]

B&C SUPERHOOD /WOMEN JW 941	XS	S	M	L	XL	2XL	3XL
A HALF CHEST	49	52	55	58	61	64	-
B BODY LENGTH FROM NECK POINT	61	63	65	67	69	71	-
C SLEEVE LENGTH	65,5	67	68,5	70	71,5	73	-
D CENTER BACK LENGTH	59	61	63	65	67	69	-