

**SIZES :** S\_M\_L\_XL\_XXL\_3XL\_4XL

**COMPOSITION :**

Main fabric : Polyester pongee 240T - 80 100%polyester

Padding : Polyester polyfil - 150 For padding 100%polyester

Padding : Polyester polyfil - 100 For Front placket and flap pocket padding 100%polyester

Fabric 1 : Cotton corduroy - 285 For inner collar, front shoulder yoke, under flap pocket and bottom binding finishing 100% cotton

Lining 2 : Polyester taffeta 210T - 60 For lining, pocket sack and inner seam binding 100%polyester

**WEIGHT :**

Main fabric : 80 gsm

Padding : 150 gsm

Padding : 100 gsm

Fabric 1 : 285 gsm

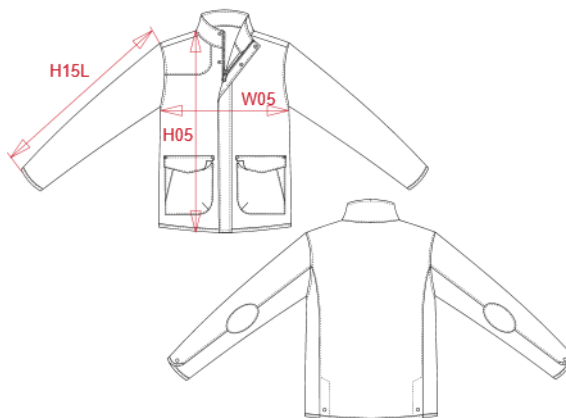
Lining 2 : 60 gsm

**TECHNICAL DETAIL :**

WR: 600mm

**ARTICLE WEIGHT :**

745 gr/pc



DESCRIPTION
<b>Français :</b> Veste matelassée homme
<b>English :</b> Men's quilted jacket
<b>Nederlands :</b> Gewatteerde herenjas
<b>Deutsch :</b> Herren-Steppjacke
<b>Español :</b> Chaqueta acolchada rombos de hombre
<b>Italiano :</b> Giacca imbottita uomo
<b>Português :</b> Casaco acolchoado de homem

COLORS	PANTONE SERIGRAPHIE
Black / Black	Black / Black
Navy / Black	433C / Black
Mossy green / Black	7771C / Black

MEASUREMENT							
Description	S	M	L	XL	XXL	3XL	4XL
<b>H05 (M)</b> Hauteur totale / Total height	73	75	77	79	81	83	85
<b>W05 (M)</b> 1/2 largeur poitrine / 1/2 chest width	52	55	58	61	64	67	70
<b>H15L (M)</b> Longueur manche longue / Long sleeve length	65,50	66,75	68	69,25	70,50	71,75	73

CARE LABEL
    

PACKING	
Box	10 pcs / box S => L:60cm W:40cm H:30cm GW:7.8kg NW:6.4kg M => L:60cm W:40cm H:30cm GW:8kg NW:6.6kg L => L:60cm W:40cm H:35cm GW:8.3kg NW:6.9kg XL => L:60cm W:40cm H:35cm GW:8.5kg NW:7.1kg XXL => L:60cm W:40cm H:35cm GW:8.8kg NW:7.4kg 3XL => L:60cm W:40cm H:35cm GW:9kg NW:7.6kg 4XL => L:60cm W:40cm H:35cm GW:9.2kg NW:7.8kg